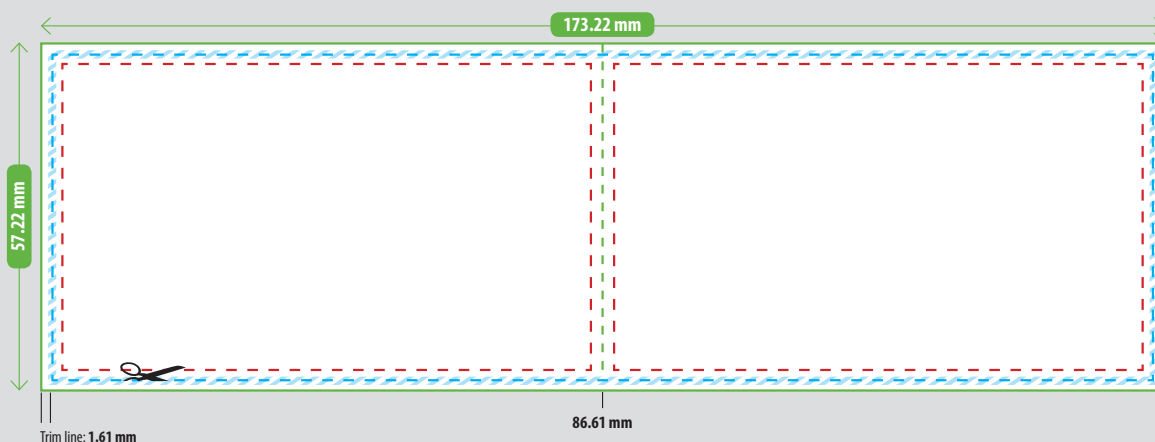


## Specifications

<b>File size:</b>	<b>173.22mm × 57.22mm</b>
<b>Product size</b> (open size):	170mm x 54mm
<b>Bleed:</b>	1.61mm
<b>Resolution:</b>	300dpi
<b>Suggested colour space:</b>	CMYK

## Layout



**File size: 173.22mm x 57.22mm**

Backgrounds need to extend across the entire format.

**Product size** (open size): **170mm x 54mm**

**Trim line: 1.61mm** from the edge of the file size.

The product is cut here. The cut may shift up to 1 mm in any direction (trim tolerance).

**Safe zone:**

**3.22mm** from the edge of the file size.

Make sure to place elements that mustn't be cut into inside this zone.



**Trim tolerance area**

The cut may shift within this area.

### Horizontal Orientation (Landscape)

Orientation at upload:

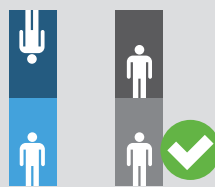


Orientation on print sheet:



### Vertical Orientation (Portrait)

Orientation at upload:



Orientation on print sheet:

