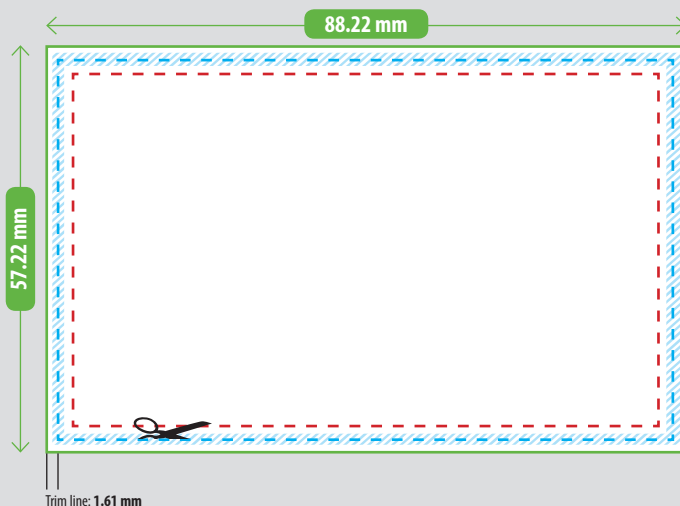


Specifications

| | |
|-------------------------|-------------------|
| File size: | 88.22mm × 57.22mm |
| Product size: | 85mm x 54mm |
| Bleed: | 1.61mm |
| Resolution: | 300dpi |
| Suggested colour space: | CMYK |

Layout



File size: 88.22mm x 57.22mm

Backgrounds need to extend across the entire format.

Product size: 85mm x 54mm


Trim line: 1.61mm from the edge of the file size.

The product is cut here. The cut may shift up to 1 mm in any direction (trim tolerance).

Safe zone:

3.22mm from the edge of the file size.

Make sure to place elements that mustn't be cut into inside this zone. Be extra careful and allow for some extra space if you would like rounded corners.

 **Trim tolerance area**
The cut may shift within this area.

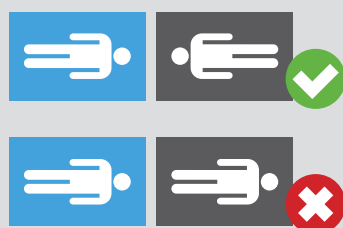
Orientation

for double sided cards

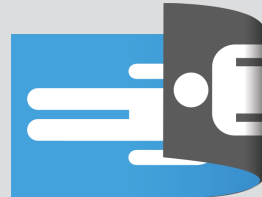
Vertical Orientation (Portrait)

Due to technical reasons, it is necessary that front and back of vertical cards are oriented in opposite directions (for the typical orientation in the print result).

Orientation at upload:



Orientation on print sheet:



Horizontal Orientation (Landscape)

Orientation at upload:



Orientation on print sheet:

